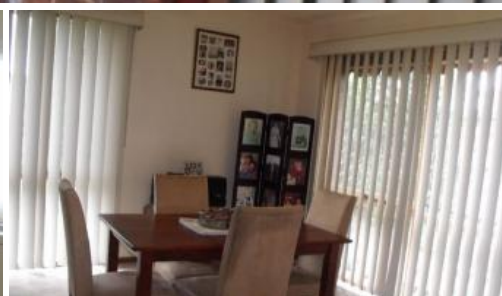
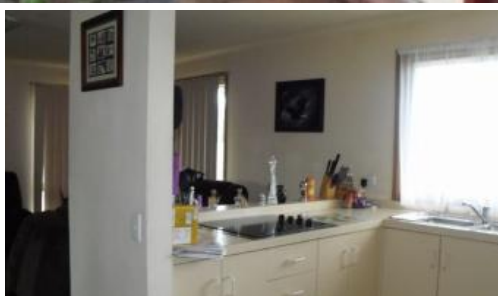
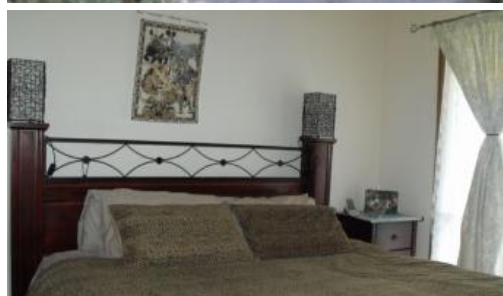


Sold



4 Dairyfarm Terrace, Hampton Park



Lovely Family Home

- *3 Bedrooms - WWC, BIR's
- *2 bathrooms
- *2 toilets
- *2 Living Areas
- *Double carport

The above information provided has been furnished to us by the vendor/s. We have not verified whether or not that information is accurate and do not have any belief in one way or the other in its accuracy. We do not accept any responsibility to any person for its accuracy and do no more than pass it on. All interested parties should make and rely upon their own inquiries in order to determine whether or not this information is in fact accurate.

🛏 3 🚿 2 🚗 2 📏 533 m2

Price	SOLD
Property Type	Residential
Property ID	3870
Land Area	533 m2

Agent Details

Las Widanage - 0429 115 115

Office Details

Australian National Real Estate
207 Warrigal Rd Hughesdale VIC
3166 Australia
03 9570 2585

