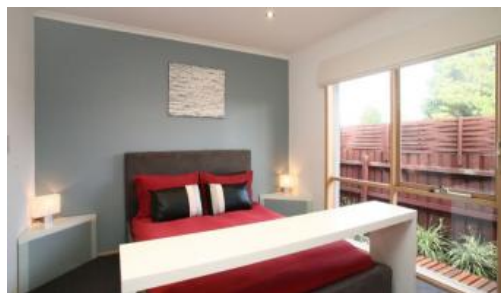


Sold



17 Dewpoint Crescent, Hampton Park



## Chic Living in South Eastern Suburbs

3 Bedrooms, master with full ensuite, 2 bathrooms, S/steel appliances incl d/washer, Fully decked, Beautifully landscaped gardens.

Extra Features: cathedral ceilings, ducted heating / split system, & double remote garage.

2.1 km to local shops.

*The above information provided has been furnished to us by the vendor/s. We have not verified whether or not that information is accurate and do not have any belief in one way or the other in its accuracy. We do not accept any responsibility to any person for its accuracy and do no more than pass it on. All interested parties should make and rely upon their own inquiries in order to determine whether or not this information is in fact accurate.*

3 2 2 619 m2

Price	SOLD
Property Type	Residential
Property ID	3869
Land Area	619 m2

### Agent Details

Las Widanage - 0429 115 115

### Office Details

Australian National Real Estate  
207 Warrigal Rd Hughesdale VIC  
3166 Australia  
03 9570 2585

