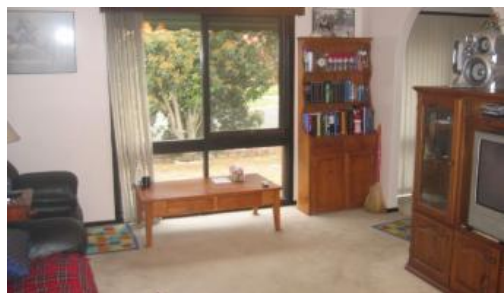


Sold



40 Millswyn Avenue, Hampton Park



## AN EASY DECISION

If you're looking for a comfortable family home, which is north facing and located close to transport, schools and shops, then you wouldn't want to miss this one. This lovely and well looked after home has three bedrooms on offer, two with built-in robes and wall to wall carpet with quality fixtures. Upon entrance you will be delightfully greeted with warm lounge/family area, which then leads to a tiled kitchen which has lots of cupboard space. Extra features include gas wall furnace, air conditioning, double steel garage, garden shed, plenty of parking space: all this on huge 604m<sup>2</sup> block. It's an easy decision for someone who knows value for money. Avoid disappointment. Inspect Today

*The above information provided has been furnished to us by the vendor/s. We have not verified whether or not that information is accurate and do not have any belief in one way or the other in its accuracy. We do not accept any responsibility to any person for its accuracy and do no more than pass it on. All interested parties should make and rely upon their own inquiries in order to determine whether or not this information is in fact accurate.*

3 1 2

Price	SOLD
Property Type	Residential
Property ID	3841

### Agent Details

Las Widanage - 0429 115 115

### Office Details

Australian National Real Estate  
207 Warrigal Rd Hughesdale VIC  
3166 Australia  
03 9570 2585

