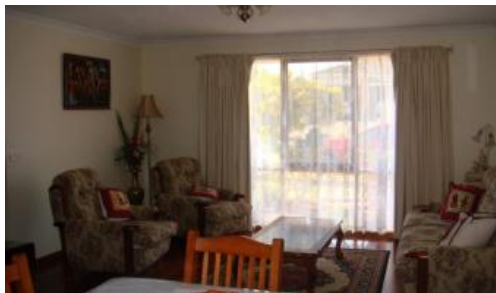


Sold



4 Stratus Court, Hampton Park



Presented and Positioned To Please

Providing excellent family accommodation and a favoured northerly aspect this attractive home is positioned in court location. Comprises entry to L-shaped lounge and dining room, good size kitchen (gas hot plates and electric wall oven) with adjacent family/meals area. There are four robed bedrooms the main with full ensuite and walk in robe, stunning timber floors, ducted heating, enclosed carport with roller door and private rear garden. With schools, transport, shopping and parkland just moments away this home is sure to please the active family.

The above information provided has been furnished to us by the vendor/s. We have not verified whether or not that information is accurate and do not have any belief in one way or the other in its accuracy. We do not accept any responsibility to any person for its accuracy and do no more than pass it on. All interested parties should make and rely upon their own inquiries in order to determine whether or not this information is in fact accurate.

🛏️ 4 🌳 2 🚗 2

Price	SOLD
Property Type	Residential
Property ID	3743

Agent Details

Las Widanage - 0429 115 115

Office Details

Australian National Real Estate
207 Warrigal Rd Hughesdale VIC
3166 Australia
03 9570 2585

