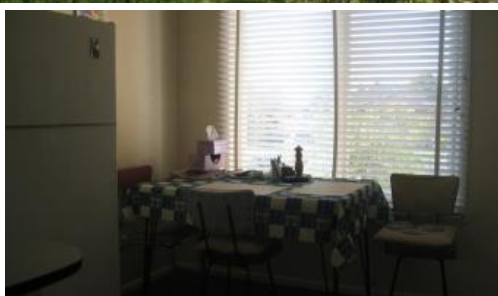


Sold



15 PARKLAND AVE, Hampton Park



'A Touch of Nostalgia'

This property is in a convenient location only minutes to schools, shopping centre and transport. The solid weather board home features spacious living area with split system air conditioner and gas heater, kitchen with eat in meals area, three bedrooms, bathroom with separate bath and laundry with separate toilet. The home features high ceilings, cornices, timber floors, and shed.

The above information provided has been furnished to us by the vendor/s. We have not verified whether or not that information is accurate and do not have any belief in one way or the other in its accuracy. We do not accept any responsibility to any person for its accuracy and do no more than pass it on. All interested parties should make and rely upon their own inquiries in order to determine whether or not this information is in fact accurate.

3 1

Price	SOLD
Property Type	Residential
Property ID	3738

Agent Details

Las Widanage - 0429 115 115

Office Details

Australian National Real Estate
207 Warrigal Rd Hughesdale VIC
3166 Australia
03 9570 2585

