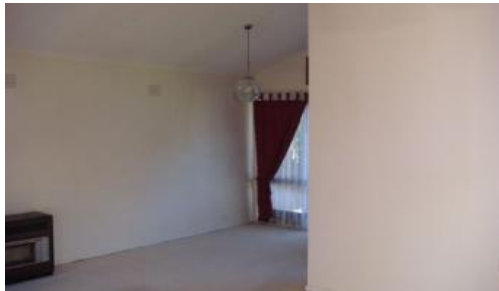


Sold

28, 132 Somerville Road, Hampton Park



So Much More

Nestled in a quiet corner of this excellent unit development is this attractive spacious home enjoying a large front and rear gardens. Comprises entry t5o large living room(with cathedral ceilings) compact kitchen (electric stove) with garden vista. There are two robed bedrooms, central bathroom, gas heating, air conditioner and timber floating floors. Also features single garage with remote access, use on communal pool and just meters to bus, shopping centre and schools. Excellent first home, investment or downsizing with excellent future growth

The above information provided has been furnished to us by the vendor/s. We have not verified whether or not that information is accurate and do not have any belief in one way or the other in its accuracy. We do not accept any responsibility to any person for its accuracy and do no more than pass it on. All interested parties should make and rely upon their own inquiries in order to determine whether or not this information is in fact accurate.

🛏 2 🚿 1 🚗 1

Price	SOLD
Property Type	Residential
Property ID	3728

Agent Details

Las Widanage - 0429 115 115

Office Details

Australian National Real Estate
207 Warrigal Rd Hughesdale VIC
3166 Australia
03 9570 2585

