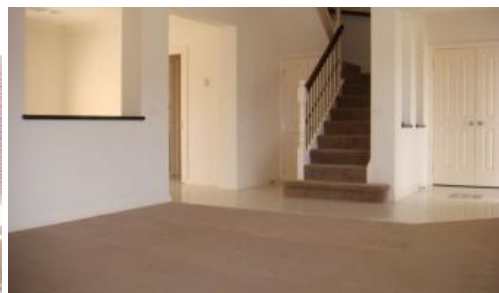
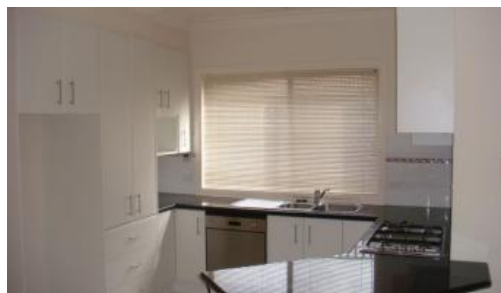


Sold

2, 135 Hinrichsen Drive, Hallam



'Double Storey with True Decadence'

Live in the lap of luxury in these imposing double storey town homes designed with flair and finished to the highest standard. Comprises grand entry to formal living room, open plan kitchen (Blanco stainless steel appliances) granite benches, adjacent meals area, laundry and powder room. Upstairs features three robed bedrooms the main with full ensuite and walk in robe, family bathroom with spa, ducted heating, evaporative cooling, and an abundance of natural light. Additional features include single garage with remote and internal access, high ceilings, courtyard and video security.

Note: Currently leased on monthly tenancy at \$1300p.c.m

The above information provided has been furnished to us by the vendor/s. We have not verified whether or not that information is accurate and do not have any belief in one way or the other in its accuracy. We do not accept any responsibility to any person for its accuracy and do no more than pass it on. All interested parties should make and rely upon their own inquiries in order to determine whether or not this information is in fact accurate.

🛏 3 🚿 3 🚗 1

Price	SOLD
Property Type	Residential
Property ID	3723

Agent Details

Las Widanage - 0429 115 115

Office Details

Australian National Real Estate
207 Warrigal Rd Hughesdale VIC
3166 Australia
03 9570 2585

