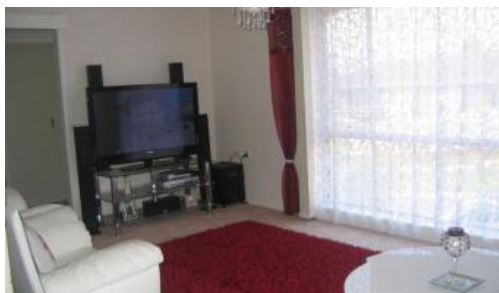


Sold



2, 42 Willow Drive, Hampton Park



Terrific Family Home

Located in a quiet location is this lovely two bedroom town house. Comprises entry to lounge with separate dining area, central kitchen with gas hot plates and electric wall oven with plenty of cupboard space. Master bedroom with a walk in robe and a two way bathroom. Additional features include ducted heating, alarm system, pergola, single lock up garage and surrounded by lovely established gardens. The transport is right outside your door, with quick access to the freeway, train station and Fountain Gate Shopping Centre.

The above information provided has been furnished to us by the vendor/s. We have not verified whether or not that information is accurate and do not have any belief in one way or the other in its accuracy. We do not accept any responsibility to any person for its accuracy and do no more than pass it on. All interested parties should make and rely upon their own inquiries in order to determine whether or not this information is in fact accurate.

2 1 1

Price	SOLD
Property Type	Residential
Property ID	3721

Agent Details

Las Widanage - 0429 115 115

Office Details

Australian National Real Estate
207 Warrigal Rd Hughesdale VIC
3166 Australia
03 9570 2585

